



Parking Design Elements

Presented by
Denis Finigan, President



New Orleans, Louisiana

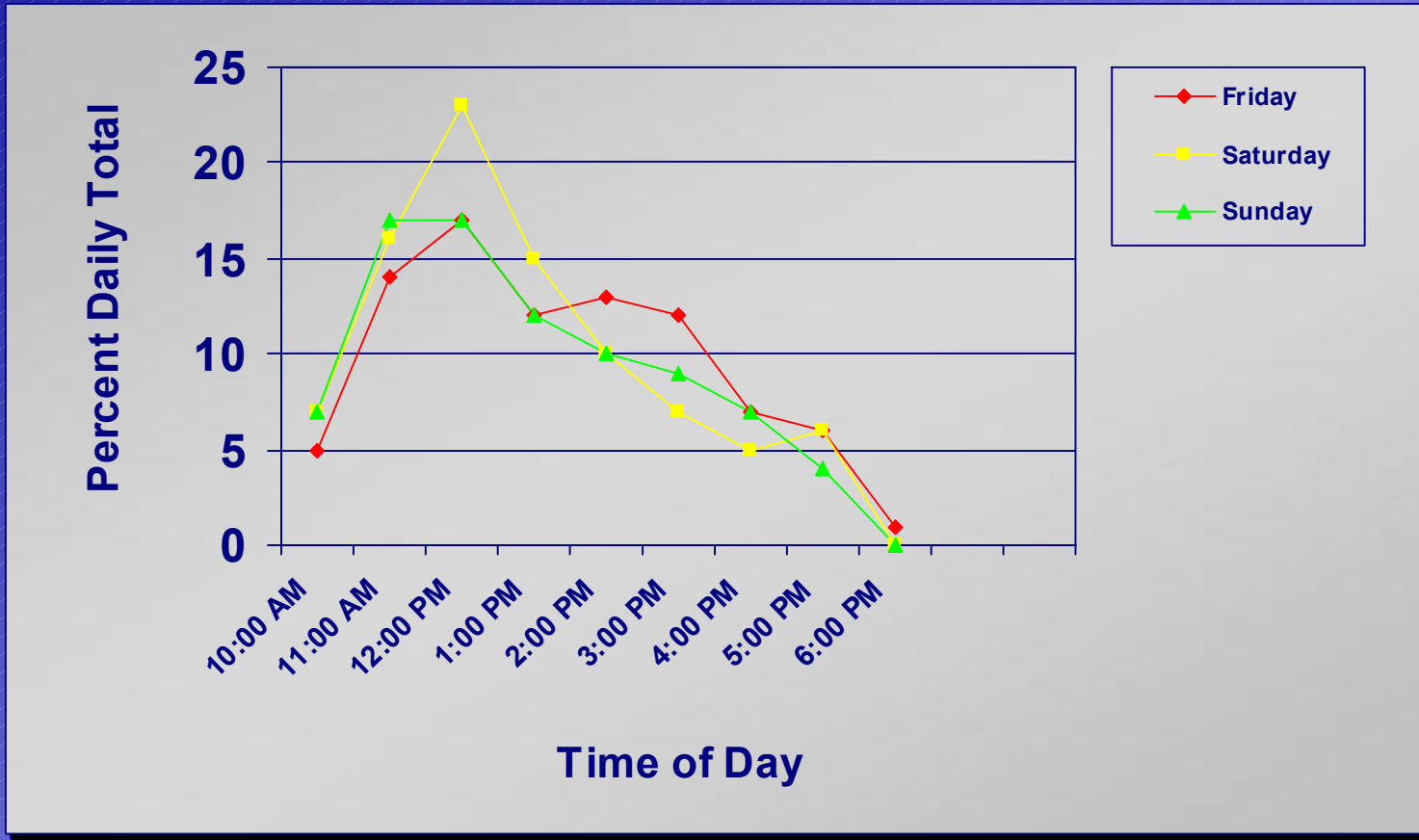
Discussion Topics

- **Access Characteristics**
- **Parking Geometrics**
- **Basic Principles of Signage**

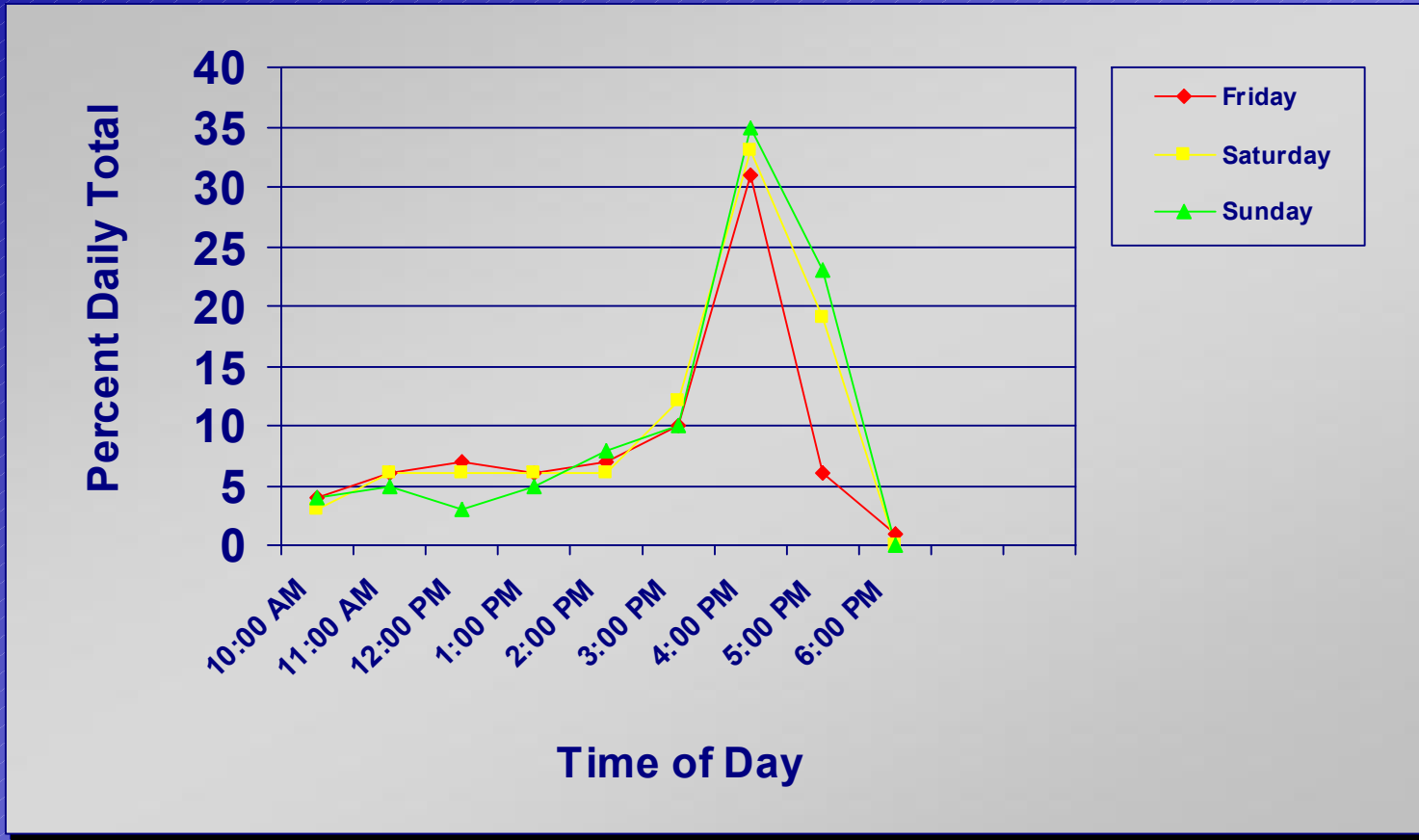
Access Characteristics

- **Horse Racing**
- **Casino**
- **Casino Parking Occupancy**

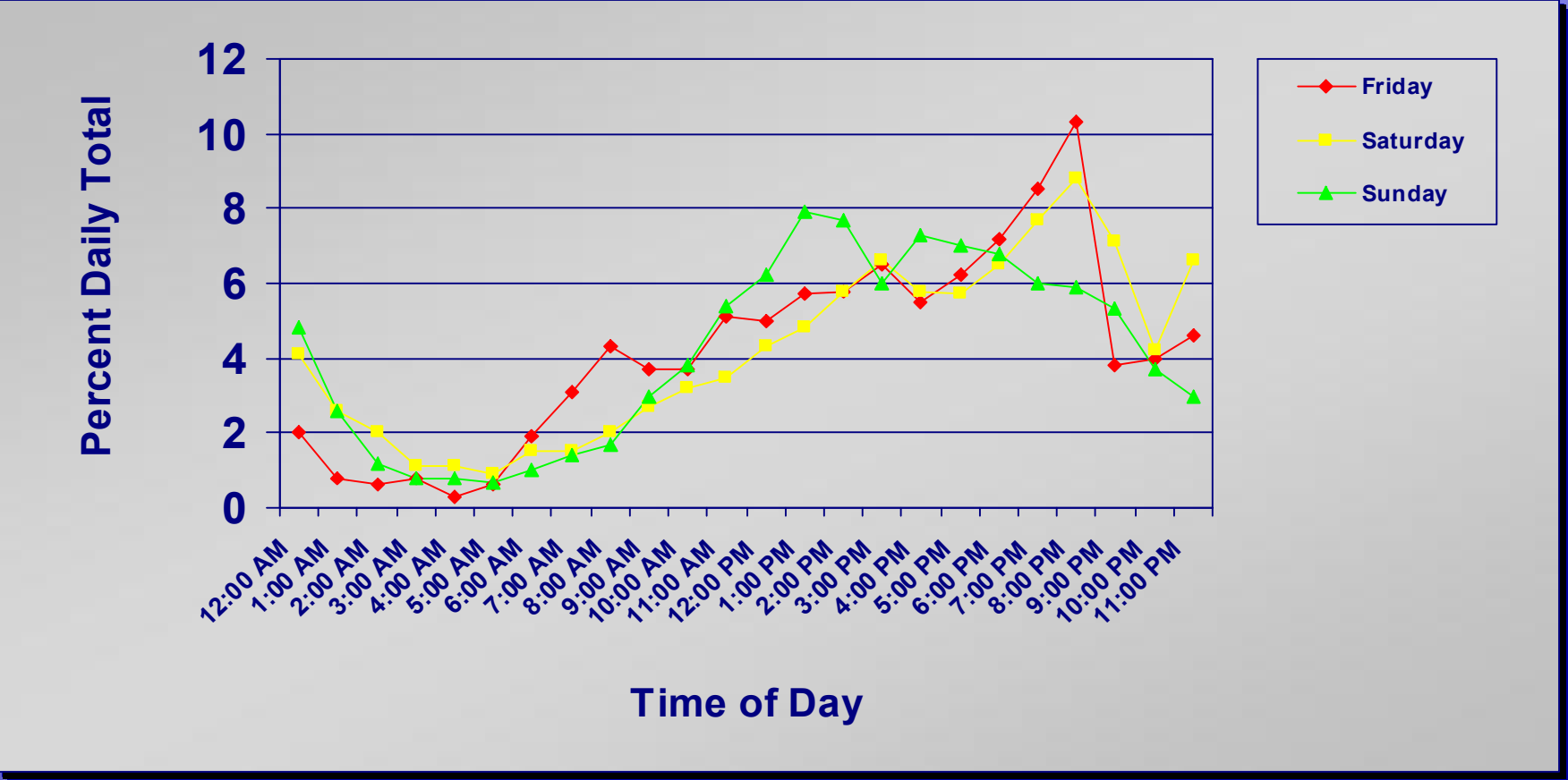
Horse Racing: Entry



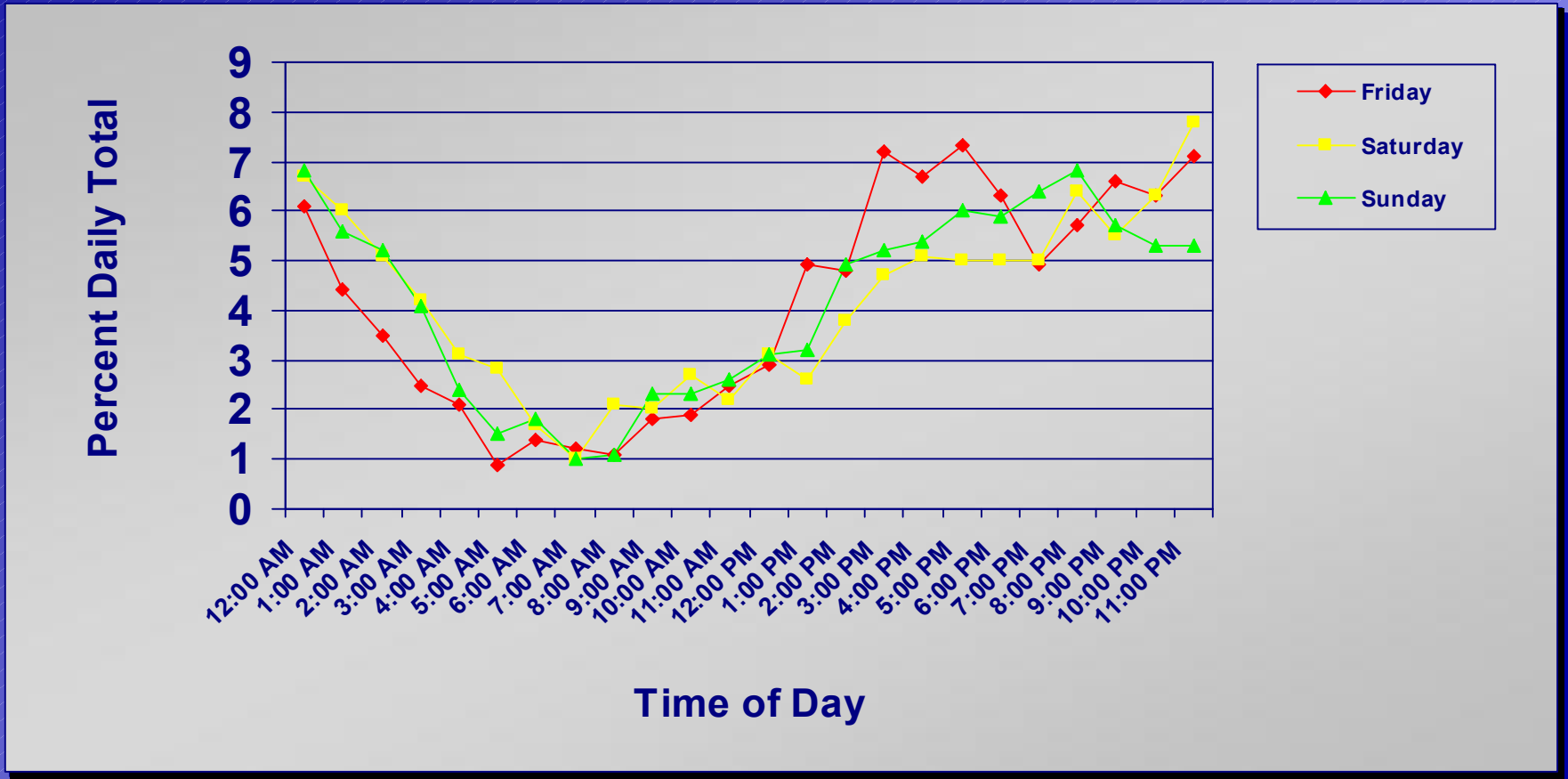
Horse Racing: Exit



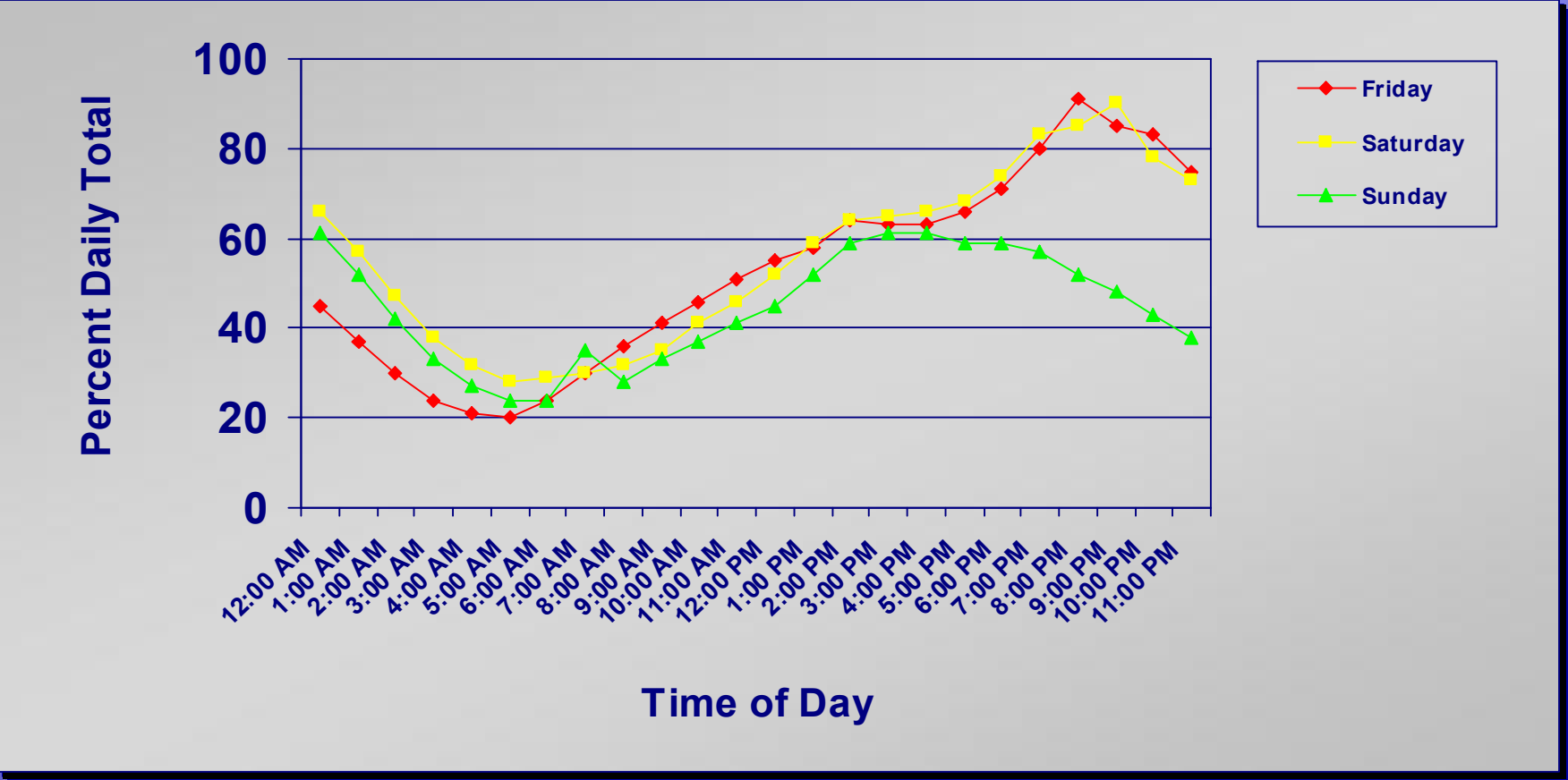
Casino Garage: Entry



Casino Garage: Exit



Casino Garage Occupancy

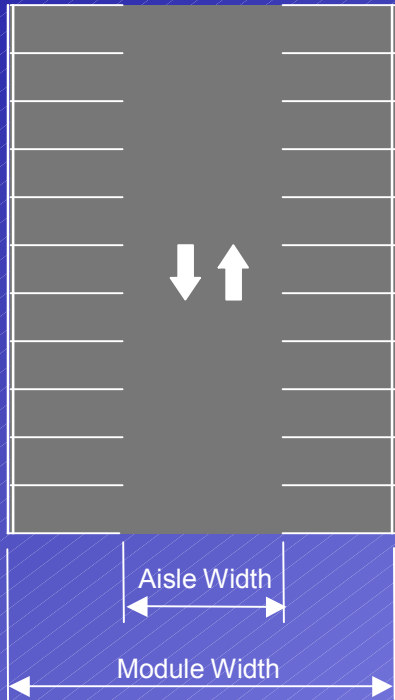


Parking Geometrics

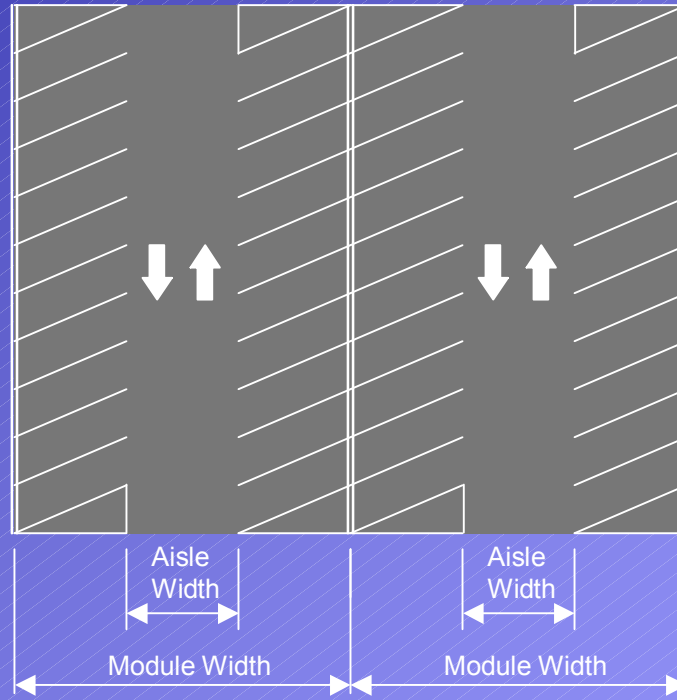
- **Module Width**
- **Parking Angle**
- **Stall Width**

Parking Layout

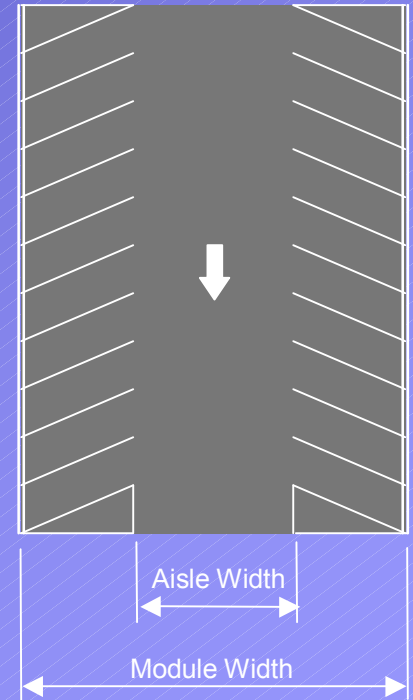
Two-Way 90°



Two-Way Angle



One-Way Angle



Parking Module Widths

Parking Angle	Aisle Width (feet)	Module Width (feet)
90°	24.0 - 26.0	59.0 - 62.0
70°	17.0 - 20.5	56.5 - 58.0
60°	14.0 - 18.0	53.0 - 55.0
45°	12.0 - 15.0	46.5 - 49.0

Minimum Parking Stall Width

Parking Characteristic	Parking Space Width (feet)
Low Turnover	8'- 6"
Low to Moderate Turnover	8'- 6" to 8'- 9"
Moderate to High Turnover	8'- 9" to 9'- 0"

Signs: Basic Principles

- **Simplicity of Message**
- **Legibility**
- **Contrast**
- **More is Not Necessarily Better**
- **A Lot More is Usually Worse**

