



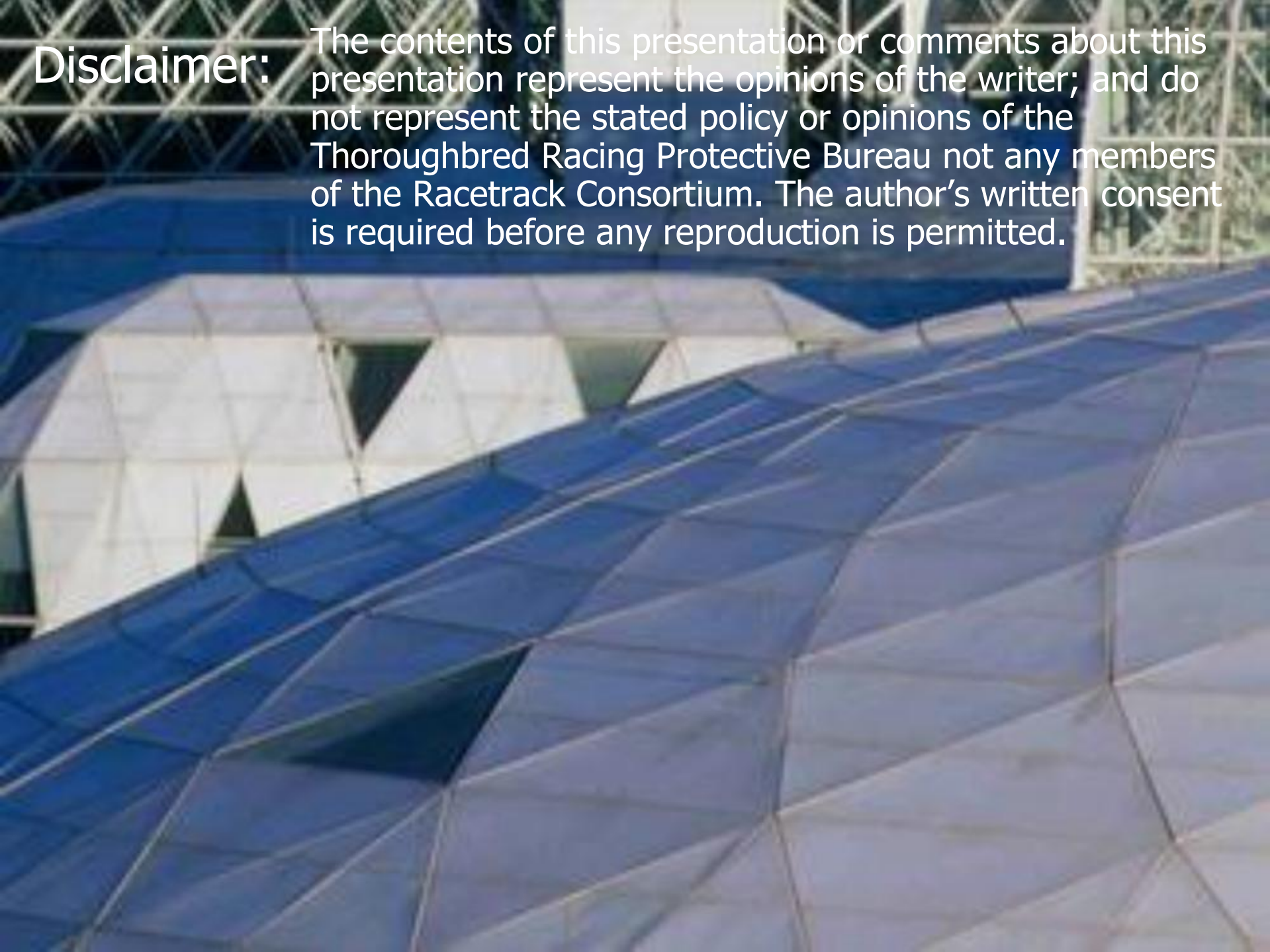
Racetrack Consortium
Wagering Enterprise System
Request for Proposal (RFP)



J Curtis Linnell

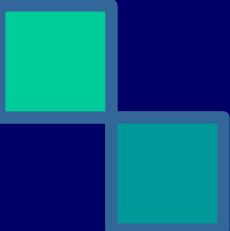

Disclaimer:

The contents of this presentation or comments about this presentation represent the opinions of the writer; and do not represent the stated policy or opinions of the Thoroughbred Racing Protective Bureau not any members of the Racetrack Consortium. The author's written consent is required before any reproduction is permitted.





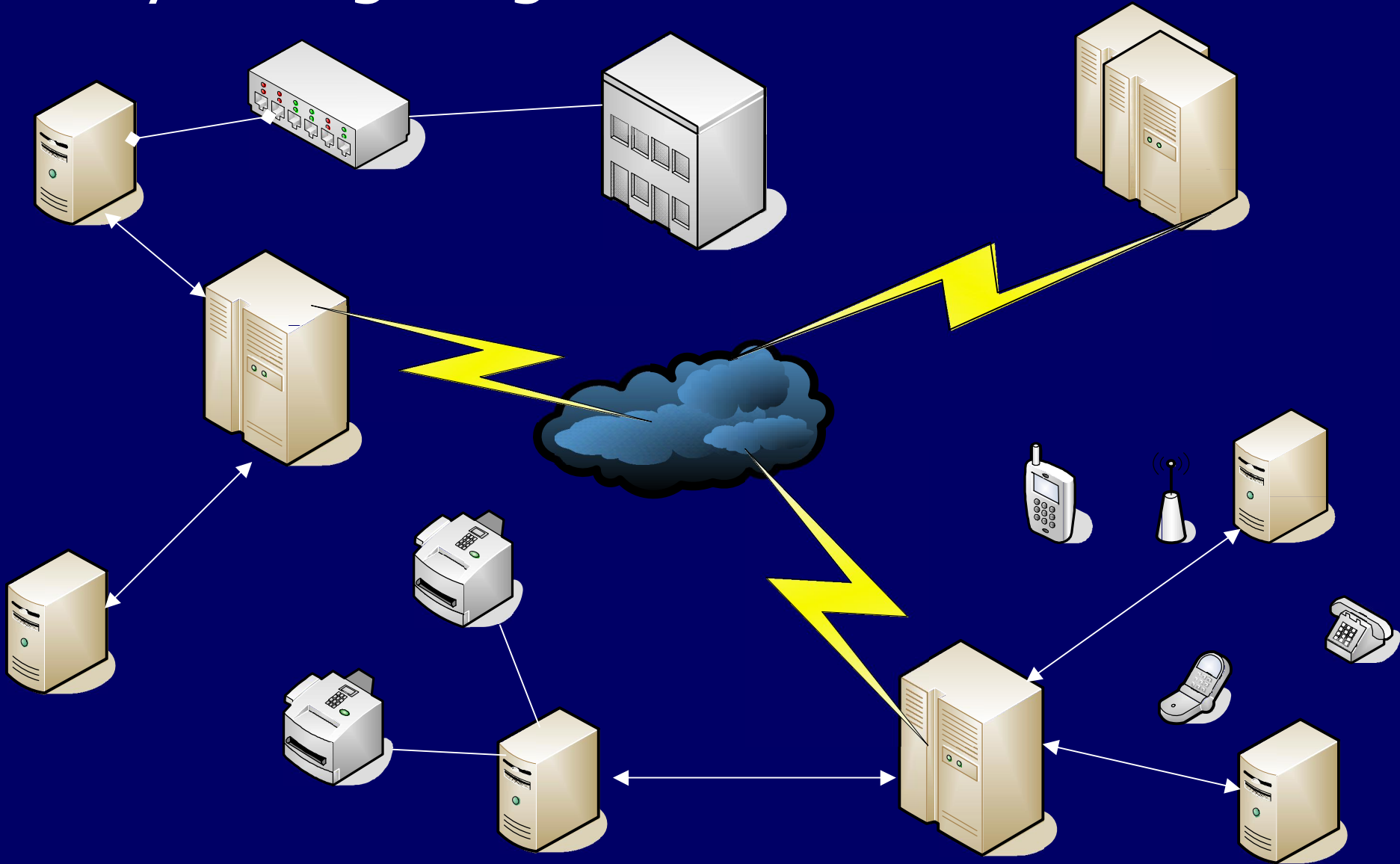
Wagering in the 21st century

- 
- Wagering is a highly interdependent activity
 - Wagering needs verification and compliance
 - Wagering currently has moved beyond the effective control of the Host
- 

Develop the Wagering Enterprise System Blueprint


- Encompass all elements of the wagering experience starting from the customer back through the distribution channels to production
- Encourage retailers to offer multiple wagering products in a secure verifiable environment with service differentiation
- Flexibility & growth
- Operational improvement & technological innovation

Today's Wagering Environment






Racetrack Association Consortium (RAC)

- Large enough to bring forth a critical mass in the pari-mutuel industry
 - NJSEA, MEC, WEG, CDI, NYRA - in total represent the host associations of about 70% of the North American turnover
- 




Encompass wagering end-to-end

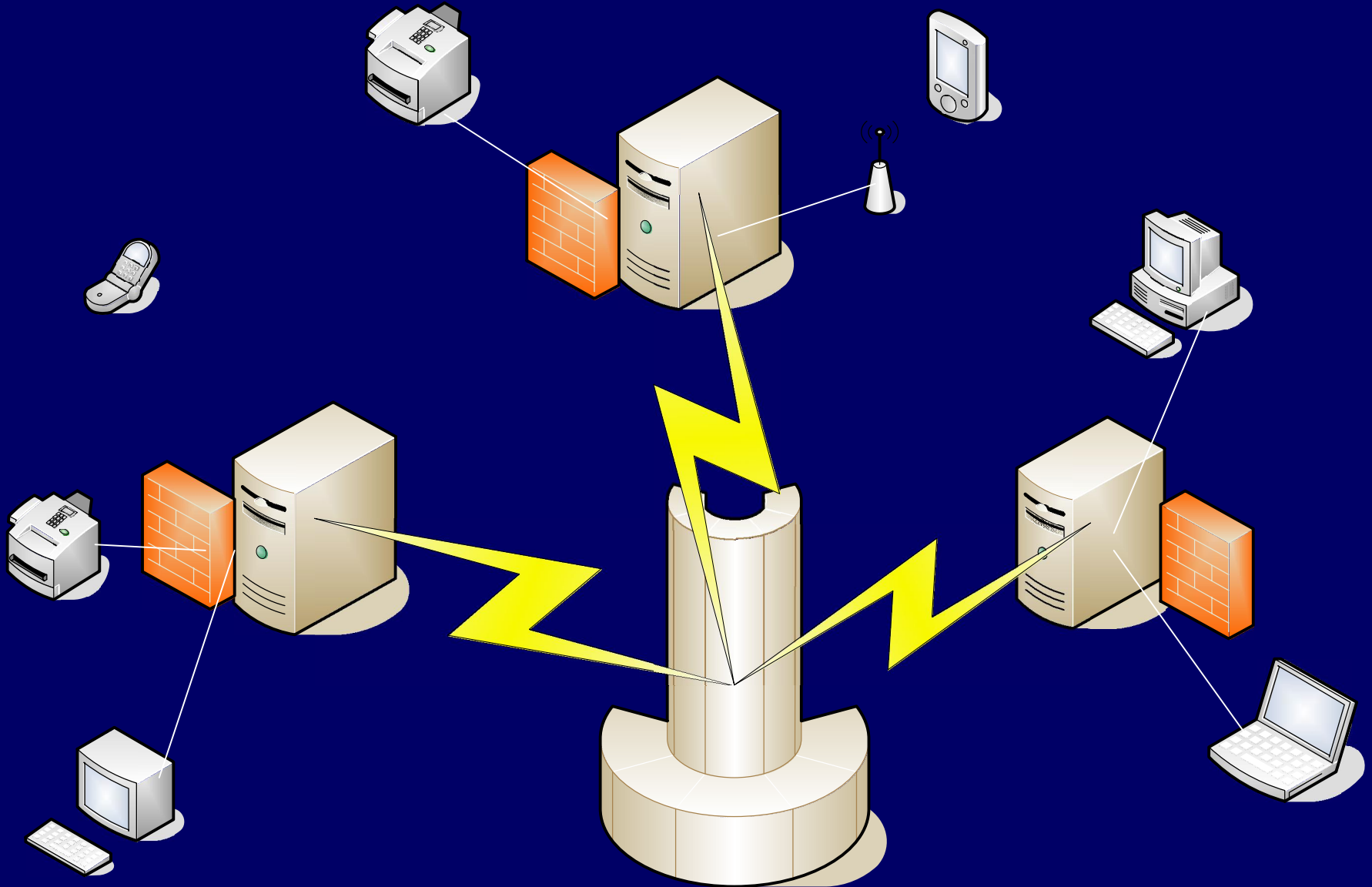
1. Customer facing wagering software
 2. Wagering hardware/CID
 3. Communications network
 4. Core wagering application
 5. Secure data center
 6. Enterprise data warehouse
 7. Help desk
- 



Host is in control but the Customer is king

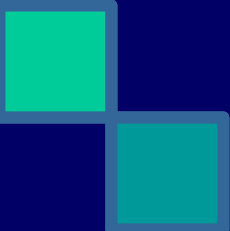

- Retailer will have open standards for software interfaces – a plug and play environment
 - Host will employ Wagering Transaction Protocol (WTP) for authorizing all wager requests
- 

Future Wagering Configuration



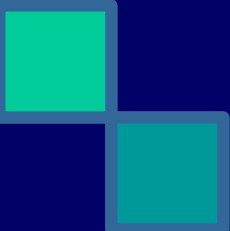



Economies of Scale: EDW

- 
- A Database that can capture all elements of the wagering process & activity
 - All data is proprietary
 - Individual companies will still use unique management reporting software
- 

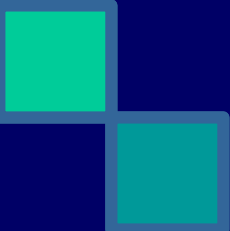



Secure Data Center

- 
- Permitted access only by Host Regulatory Agency & central security database
 - Completely redundant second facility
 - Multiple points of entry for additional Racetrack Associations
- 




Communications network

- 
- Always up central core network
 - Able to efficiently handle wagering transaction requests and wagering authorizations
 - Integrated connectivity end to end
 - Secure
- 



Help desk

- Support responsibility for all elements of the wagering chain
 - Able to monitor the wagering process as a whole
 - Produce performance benchmarks
- 



JC Linnell
TRPB Wagering Analyst
Fair Hill, Maryland
Wagering@TRPB.com